



2026 FEATURED PRODUCTS

SHADE

SUNSHADE POLES

J-LOCK SUNSHADE SYSTEM



Introducing the J-Lock Sun-Shade System – a lightweight, secure, and robust shade package designed to seamlessly integrate with your boat's gunnel for fast, reliable shade. Featuring a Twist & Lock plunger design, the lightweight fiberglass shade pole easily inserts into the Type-316L base, then twists and locks the pole in place for a safe and secure connection. The pole base features a Type-316L polished stainless steel J-Lock that remains locked when setup. To remove the pole, simply push down, untwist and remove it from the base. Once removed, the plunger cap returns to its flush position for an elegant integration in the gunnel. At the top of the fiberglass pole, a Type-316L stainless-steel fitting, allows for an easy D-ring attachment from your custom fabric to the top of the pole.

- ▶ Type-316L stainless-steel hardware and base with a polished finish (sold separately)
- ▶ Base features a retractable flush-mount plunger
- ▶ Patent-pending Twist & Lock technology for a tool-less J-Lock security system
- ▶ Lightweight black fiberglass pole available in 48.5" or 60.6" tall
- ▶ Includes carrying bag for storage



PART NUMBER	DESCRIPTION	LENGTH	WIDTH	UNIT	PACK	UPC
F16-3475	15° SS Twist Lock Base	4.1"	2.5"	Each	12	631410094060
F16-3490	90° SS Twist Lock Base	4.1"	2.5"	Each	12	631412094082
T10-7748-1	Fiberglass Poles, 7/8" x 48.5" w/ carrying bag	48"	-	Pair	6	631416094125
T10-7760-1	Fiberglass Poles, 7/8" x 60.6" w/ carrying bag	60"	-	Pair	6	631417094131

SHADE

SUNSHADE POLES



Extend your time on the water and at the sandbar with the Tele-Sun Shade Poles! The Tele-Sun Shade Poles are easy to install and stow. Simply insert the poles into your boat's rod holders, secure a sun-protecting fabric to the boat top, attach the fabric connector to the poles and extend the poles into position. The Tele-Sun Shade Poles can be mounted to the bow or stern of your boat, depending on your preference. See below for telescoping range.

ALUMINUM TELE-SUN SHADE POLES



- ▶ Lightweight drawn and anodized aluminum tube material
- ▶ Easy installation to deck-mounted rod holders with 1/4" pin
- ▶ Nylon cleat allows for easy adjustment of line tension
- ▶ Tip ring feature allows for alternative fabric clamping bungee cord system
- ▶ Extends from 44.6" to 69.37"
- ▶ Includes Carry Bag

CARBON FIBER TELE-SUN SHADE POLES

- ▶ Patent US 10,427,757 for locking mechanism
- ▶ Patent US 11,116,197 for 360° swivel collar
- ▶ Lightweight Carbon Fiber material with clear, Awl Grip UV-protection
- ▶ Easy installation to deck-mounted rod holders with 1/4" pin
- ▶ Cam cleat allows for easy adjustment of line tension
- ▶ Open hood feature allows for alternative fabric clamping bungee cord system
- ▶ Extends from 52.89" to 80.4"
- ▶ Includes Carry Bag



T10-7005CF



T10-7001VEL



F31-0702BXY
(Fits T10-7005CF only)

PART NUMBER	DESCRIPTION	UNIT	PACK	UPC
T10-7001VEL	Aluminum Tele-Sun Shade Pole w/ Carry Bag	Pair	4	631049090457
T10-7005CF	Carbon Fiber Tele-Sun Shade Pole w/ Carry Bag	Pair	2	631040090364
F31-0702BXY	Flush Mount Rod Holder 10°	Each	24	631020090162

SPORT FISHING OUTRIGGER MOUNTS

GRAND SLAM 300



Single-Handle Operation is Here! Introducing the Grand Slam 300 – a stainless-steel / polished, anodized aluminum, single-handle Outrigger Mount that delivers enhanced safety and performance with smooth, one-handed operation from the deck. Easily adjust rotation and lift of outrigger poles using the GS-300’s ergonomic crank handle, which locks flush into the base. The Mount’s attractive, all-metal design means no plastic components, a greater water seal and increased protection from the elements. The GS-300 pairs with TACO’s award-winning Open Water Internal & Collapsible Carbon Fiber Outrigger Poles, as well as Aluminum or Carbon Fiber Tele-Outrigger Poles up to 22’ with an underside pin-locking connection – eliminating the need for port and starboard designations.

PIN-LOCKING ARM

- No port or starboard designation
- Underside locking pin connection
- Arm lifts up to 46.5° from horizontal position for kite fishing and dock clearance
- Pairs with 1-1/2” DIA Outrigger Poles up to 22’
- Can be used with Outrigger Base Reducer for 1-1/8” DIA poles

HANDLE

- Stainless-steel, ergonomic, single-hand crank handle with ball bearing
- Enables lift and rotation of outrigger poles from safety of the deck
- Unique, locking flip handle
 - Keeps the handle knob on the bottom when lifting or rotating the outrigger
 - Provides full torque control and safety of deployment at all times
- Robust, dual-detented lifting crank handle locks flush into base

MOUNT

- Ideal for boats 25’ to 40’
- Constructed from cast stainless-steel and machined aluminum for a stronger, lighter base
- Each mount weighs 15 pounds (30 pounds per pair)
- Safety detents prevent uncontrolled rotation when deploying outrigger poles
- Allows a controlled 180° rotation, if needed
- Locking head eliminates downward creep of outrigger poles
- Equipped to handle the torque and whip generated by poles up to 22’
- Includes mounting hardware for easy installation
- Base hole pattern matches all TACO Marine Grand Slam models, as well as the industry standard hole patterns of other top-mount outrigger systems
- Backing plates (BP-0300) sold separately



PART NUMBER	DESCRIPTION	UNIT	PACK	UPC
GS-300*	Grand Slam 300 Outrigger Mount	EA	2	631164091605

*MAP Program

SPORT FISHING

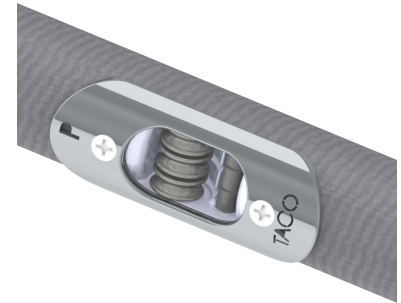
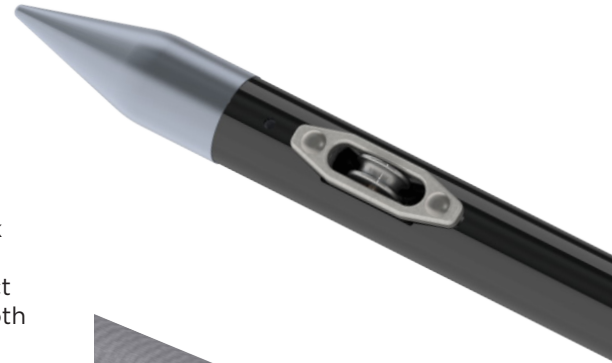
COLLAPSIBLE OUTRIGGER POLES



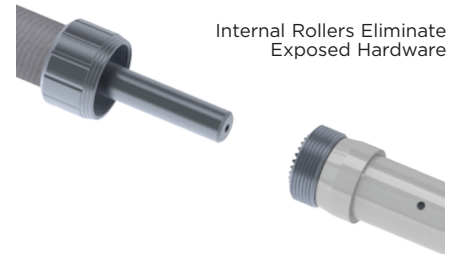
OPEN WATER INTERNAL & COLLAPSIBLE CARBON FIBER OUTRIGGER POLES

Introducing the Open Water Internal & Collapsible Carbon Fiber Outrigger Poles for the ultimate in sport fishing. Unlike other internal, triple-rigged poles on the market, these poles require NO tools for assembly and can be quickly collapsed for easy transportation and storage. Our 3-piece design features a patent-pending latching mechanism that provides a Twist & Lock connection, which enables easy and secure setup when heading offshore. The adjustable ratchet base with a threaded-locking collar allows for perfect indexing of the halyard line direction to eliminate chaffing and ensure smooth ascent and descent of outrigger lines. Each halyard line has its own patent-pending internal tube running the length of the pole to its exit point that ensures smooth line operation with no tangling. Compatible with all standard 1-1/2" outrigger mounts, these poles come internally rigged with premium 400-pound mono halyard line in three distinct colors - eliminating exposed hardware and ensuring you have the best trolling setup when offshore, kite fishing, or maneuvering when docking.

- ▶ Available in 19' and 22'
- ▶ 3-section pole with our patent-pending latching Twist & Lock mechanism connection
- ▶ Adjustable base/butt for perfect halyard, trolling alignment
- ▶ Internally rigged with 400-pound mono halyard line in three distinct colors
- ▶ Poles come labeled with port and starboard designations
- ▶ Poles can be removed and collapsed/folded for easy storage and transportation
- ▶ Pairs with all TACO outrigger mounts with standard 1-1/2" diameter pin-locking arm
- ▶ Compatible with other outrigger mounts on the market that accepts 1-1/2" diameter poles
- ▶ Shipping-friendly in 96" box
- ▶ Replacement standard and premium rigging kits available (**RK-0003TSP, RK-0003TSS**)



Internal Rollers Eliminate Exposed Hardware



Adjustable, Ratchet Base/Butt with Threaded-Locking Collar



Twist & Lock Latching Mechanism



PART NUMBER	DESCRIPTION	LENGTH	UNIT	PACK	UPC
OI-3190CF	Open Water Internal & Collapsible Carbon Fiber Outrigger Poles	19"	PR	2	631153091494
OI-3220CF	Open Water Internal & Collapsible Carbon Fiber Outrigger Poles	22"	PR	2	631377093731

SPORT FISHING

OUTRIGGER MOUNTS



Our sport fishing products are recognized worldwide for durability and quality, and endorsed by professional anglers who've used their Grand Slams in some of the toughest conditions at sea.

GRAND SLAM 390 / 390XL / 390-180

- Stronger gusset support and thicker arm for enhanced durability
- Safely lift and rotate poles from the deck
- Offset handle for better hand clearance
- GS-390XL has an elongated base for tops up to 4" thick
- GS-390-180 has a fore-facing rotation handle for boats that require additional hand clearance
- Ideal for boats 25' to 40'



GS-390

GS-390XL

GRAND SLAM 280 / 2801

- Accepts 1-1/2" butt end diameter, heavy-duty outriggers
- Uses spline lock technology for secure outrigger elevation
- Adjustable 12 locking fishing positions
- Fits TACO Marine® Outrigger-Ready pre-drilled plates (BP-150)
- Available with offset handle for greater hand clearance (GS-2801)
- Ideal for boats 20' to 36'



GS-280

GS-2801



PRO SERIES GS-500

- Pairs exclusively with TACO's Carbon Fiber Twist & Lock Tele-Outrigger Poles up to 24'
- Rotate and lift outrigger poles from the safety of the deck
- Robust, dual-detented lifting crank handle locks flush into base
- Dredge load tested to handle a full, professional fishing spread
- Includes matching 6" X 8" X 1/2" thick oval back plates
- Ideal for boat from 32' to 50'+



PART NUMBER	DESCRIPTION	UNIT	PACK	UPC
GS-390	Grand Slam 390 Outrigger Top Mount	PR	2	630975089719
GS-390-180	Grand Slam 390 with Arm Facing Forward	PR	2	630976089725
GS-390XL	Grand Slam 390XL Outrigger Top Mount	PR	2	631012090088
GS-280	Grand Slam 280 Top Mount	PR	2	630838082703
GS-2801	Grand Slam 280 w/ 30° Offset Handle	PR	2	630838082987
GS-500	Pro Series GS-500 Outrigger Mount	PR	2	630893088894

SPORT FISHING

OUTRIGGER & CENTER RIGGER MOUNTS



PRO SERIES GS-400

- ▶ Pairs with TACO's 18' Deluxe Aluminum Tele-Outriggers (OT-0318HD), Carbon Fiber pin-locking Tele-Outriggers (OT-3160CF / OT-4200CF) or any 1-1/2" outrigger poles
- ▶ Strong locking head allows for perfect positioning
- ▶ Offset handle for better hand clearance
- ▶ Ideal for boats up to 50'



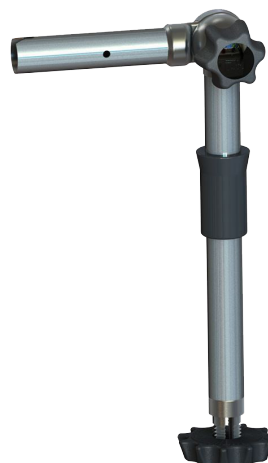
GRAND SLAM 170 / 170-2

- ▶ Designed for use with standard 1-1/8" butt OD outriggers
- ▶ Delrin bearings and stainless-steel internal locking mechanism offers smooth adjustments, secure positioning and prevents movement
- ▶ Available as a single Center Rigger Mount (GS-170-2)
- ▶ Versatile mounting base for 5'W X 6'L of shade with ShadeFin®
- ▶ Ideal for boats 18' to 24'

ADJUSTABLE CENTER RIGGER ROD HOLDER MOUNT

T10-3000-6

- ▶ Manufactured from Type-316L stainless steel
- ▶ Features Sure-Grip knob for easy and secure angle adjustment
- ▶ Adjusts up and down every 15° with safety detents
- ▶ Locking Knob secures the mount in place
- ▶ Features nylon sleeve for additional rod holder stabilization
- ▶ Includes self-aligning notch and pin-locking hole
- ▶ Pairs with ShadeFin and 1-1/8" diameter center rigger poles



PART NUMBER	DESCRIPTION	UNIT	PACK	UPC
GS-400	Pro Series GS-400 Outrigger Mount	PR	2	630889088853
GS-170	Grand Slam 170 Outrigger Top Mount, 1-1/8" OD	PR	4	630838081317
GS-170-2	Grand Slam 170-2 Outrigger Center Mount, 1-1/8" OD	EA	4	630838082710
T10-3000-6	Adjustable Center Rigger Rod Holder Mount, 1-1/8" OD	EA	2	631046090429

SPORT FISHING

TELE-OUTRIGGER POLES



CARBON FIBER TELE-OUTRIGGERS

Equip your boat with award-winning Carbon Fiber Outrigger Poles for the ultimate offshore fishing experience. Our patented, innovative design was built to meet the demands of those who need to get the most out of their high-performance fishing boats. Our Carbon Fiber Tele-Outrigger Pole is by far stronger and lighter than any other aluminum pole on the market today. The cylindrical design has the strength to allow for pulling full, triple-tier dredges of ballyhoo, mullet or squids at higher speeds. Available with either a pin-locking or Twist & Lock butt.

- ▶ Patent US 11,116,197
- ▶ UV-resistant, clear coated black carbon fiber pole construction
- ▶ Stainless-steel Type-316L swivel rings and anodized aluminum collars
- ▶ Double outrigger line design on the 16' poles and triple outrigger line design on the 20' and 24' poles for either mono or Dacron
- ▶ Patented swivel roller design allows for movement of the rollers to swivel in the direction of lures or bait
- ▶ 16' and 20' Poles telescope to less than 8' for bridge clearance and trailering
- ▶ 24' telescope to less than 9'
- ▶ Designed for use with universal mounts or our Grand Slam Mounts
- ▶ The 16' pole is ideal for boats under 35' long
- ▶ 20' and 24' poles ideal for boats up to 50' long
- ▶ Includes adjustable roller line caddy with stainless steel rollers with brass bushings - allowing for easy rigging to the T-top or gunnel and better line management
- ▶ Locking pin design keeps poles from collapsing when fully extended and allows for easy collapsing
- ▶ Sold in Pairs

CARBON FIBER TELE-OUTRIGGER INCLUDES



Line Caddy for
20' & 24' Pole*



Line Caddy
for 16' Pole*



Precision-Locking Pin



PART NUMBER	DESCRIPTION	LENGTH	DIAMETER	UNIT	PACK	UPC
OT-3160CF	Carbon Fiber Tele-Outrigger Poles	16'	1-1/2"	Pair	4	630838084912
OT-4200CF	Carbon Fiber Tele-Outrigger Poles	20'	1-1/2"	Pair	2	630838084929
OT-4240CF	Carbon Fiber Tele-Outrigger Poles	24'	1-1/2"	Pair	2	631363093662
OT-4200CF-HD	Carbon Fiber Tele-Outrigger Poles, Twist & Lock	20'	1-1/2"	Pair	2	630925089219

SPORT FISHING

TELE-OUTRIGGER POLES



18' DELUXE ALUMINUM TELE-OUTRIGGERS



Designed for offshore trolling in search of bigger fish, these poles have a thicker wall for enhanced durability and feature patented 360° swivel rollers for better natural bait presentation and reduced halyard friction. The Deluxe Poles telescope below 8' for trailering, storage and bridge clearance and extend to 18' - increasing the strike zone when fishing. They pair with TACO Grand Slam 280, 390 and 400 series mounts and are available in silver/silver and black/silver.

- ▶ Patent US 11,116,197
- ▶ 3-Piece telescopic aluminum pole
- ▶ Easily collapsed and stowed
- ▶ Patented 360° swivel collars
- ▶ Roller bearing halyard pulleys
- ▶ Increased aluminum wall thickness for durability
- ▶ Additional swivel collar to separate halyard lines



Precision-Locking Pin



ALUMINUM TELE-OUTRIGGERS

If you blue water fish, you've seen the TACO Marine Aluminum Tele-Outrigger Poles. Combined with our Outrigger Top Mount, these poles have helped fishermen launch their long bait into the way-back position for many years.

- ▶ 3-Piece telescopic aluminum pole
- ▶ Telescopes to less than 6' for bridge clearance, trailering and storage
- ▶ Locking pin feature for secure placement when extended



PART NUMBER	DESCRIPTION	LENGTH	DIAMETER	UNIT	PACK	UPC
OT-0318HD-VEL	Aluminum Pole w/ Rollers (Silver/Silver)	18'	1-1/2"	PR	4	630918089141
OT-0318HD-BKA	Aluminum Pole w/ Rollers (Silver/Black)	18'	1-1/2"	PR	4	630919089157
OT-0442BKA15	Aluminum Pole (Black/Silver)	15'	1-1/8"	PR	4	630838084769
OT-0442VEL15	Aluminum Pole (Silver/Silver)	15'	1-1/8"	PR	4	630838011604
OT-0542BKA15-HD	Aluminum Pole (Black/Silver)	15'	1-1/2"	PR	4	630838011970
OT-0542VEL15-HD	Aluminum Pole (Silver/Silver)	15'	1-1/2"	PR	4	630838011772

SPORT FISHING

RIGGING KITS



We have taken the guesswork out of how to rig your outrigger poles. TACO Sport Fishing Rigging Kits provide you with everything you need to successfully rig and be ready to go offshore.



RK-0001PB/RK-0002PB

PREMIUM SINGLE OR DOUBLE RIGGING KIT

- Single or Double Roller Pulley Shock Cord with Stainless-Steel Snap Hook and Eye Insert
- 1/8" thick, 100' or 200' Dacron Rigging Cord in Black
- Adjustable Tension Release Clip
- 1-1/4" Outrigger Line Ball Stops (RK-0001PB)
- 1-3/4" Outrigger Line Ball Stops (RK-0002PB)
- Pad Eye with Screws
- Double Sleeve Crimp
- Swivel
- Snap Swivel
- Quick Dry Mesh Bag



RK-0001SB

STANDARD RIGGING KIT

- Glass Ring with Brass Strap Clip
- 1/8" thick, 100' Dacron Rigging Cord in Black
- Adjustable Tension Release Clip
- 1 1/4" Outrigger Line Ball Stops
- Pad Eye with Screws
- Double Sleeve Crimp
- Swivel
- Snap Swivel
- Quick Dry Mesh Bag



RK-0001PCB

CENTER RIGGING KIT

- Single Roller Pulley Shock Cord with Stainless-Steel Snap Hook and Eye Insert
- 1/8" thick, 50' Dacron Rigging Cord in Black
- Adjustable Tension Release Clip
- 1-1/4" Outrigger Line Ball Stop
- Pad Eye with Screws
- Double Sleeve Crimp
- Swivel
- Snap Swivel
- Quick Dry Mesh Bag



RK-0002MP

PREMIUM MONO DOUBLE RIGGING KIT

- Double Roller Pulley Shock Cord with Stainless-Steel Snap Hook
- 1/8" thick, 180' coil of Lindgren Pitman 400# Monofilament in Black
- Adjustable Tension Release Clips
- 1-3/4" Outrigger Line Ball Stops
- Stainless-Steel Eye Strap and Screws
- Double Sleeve Crimps
- Coastlock-style Swivels and Snap Swivels
- Quick Dry Mesh Bag



RK-0003MP

PREMIUM MONO TRIPLE RIGGING KIT

- Ronstan Triple Roller Pulley Shock Cord with Stainless-Steel Snap Hook
- 1/8" thick, 180' coil of Lindgren Pitman 400# Monofilament in Black
- Adjustable Tension Release Clips
- 1-3/4" Outrigger Line Ball Stops
- Stainless-Steel Eye Strap and Screws
- Double Sleeve Crimps
- Coastlock-style Swivels and Snap Swivels
- Quick Dry Mesh Bag



RK-0003PB

PREMIUM BRAID TRIPLE RIGGING KIT

- Ronstan Triple Roller Pulley Shock Cord with Stainless-Steel Snap Hook
- 1/8" thick, 300' Dacron Rigging Cord in Black
- Adjustable Tension Release Clips
- 1-3/4" Outrigger Line Ball Stops
- Stainless-Steel Eye Strap and Screws
- Double Sleeve Crimps
- Coastlock-style Swivels and Snap Swivels
- Quick Dry Mesh Bag

PART NUMBER	DESCRIPTION	UNIT	PACK	UPC
RK-0001PB	Premium Single Rigging Kit	Each	6	630838009953
RK-0002PB	Premium Double Rigging Kit	Each	6	630838009977
RK-0001SB	Standard Single Rigging Kit	Each	6	630838009991
RK-0001PCB	Center Single Rigging Kit	Each	6	630838012069
RK-0002MP	Premium Mono Double Rigging Kit 400#	Each	6	630838085162
RK-0003PB	Premium Triple Braid Rigging Kit	Each	2	630838085148
RK-0003MP	Premium Triple Mono Rigging Kit 400#	Each	2	630838085179

SPORT FISHING

RIGGING KIT COMPONENTS

At TACO Marine, we offer all of the high-quality rigging components needed to make this job easy, efficient and trouble-free.



COK-0001B-2



COK-0001T-2



COK-0008B-1



COK-0017-2 / COK-0018-2



COK-0020-2

COK-0021-2

COK-0022-2

COK-0043-1



COK-0004G-2



F16-1200-2



F40-0030BKA-1

PART NUMBER	DESCRIPTION	UNIT	PACK	UPC
COK-0001B-2	Standard Zip Outrigger Release Clip	Pair	12	630838085049
COK-0001T-2	Premium Outrigger Release Clip	Pair	12	630838085056
COK-0004G-2	Outrigger Class Rings	Pair	12	630838085131
COK-0008B-1	Black Dacron 1/8" Line, 100'	Each	12	630838015473
COK-0017-2	Outrigger Line Ball Stops, 1-1/4"	Pair	12	630838085124
COK-0018-2	Outrigger Line Ball Stops, 1-3/4"	Pair	12	630838085063
COK-0020-2	Shock Cord w/ Single Pulley, 12"	Pair	6	630838085087
COK-0021-2	Glass Eye w/ Shock Cord, 12"	Pair	6	630838085094
COK-0022-2	Shock Cord w/ Double Pulley, 12"	Pair	6	630838085100
COK-0043-1	Triple Roller w/ Shock Cord Pulley, 16"	Each	6	630838085155
F16-1200-2	Stainless Steel Eye Straps	4 Pack	12	630838085117
F40-0030BKA-1	Outrigger Line Caddy for 1-1/8" & 1-1/2" Poles	Pair	12	630838026974

SPORT FISHING

ROD HOLDER CLUSTERS



At TACO Marine, we have the answer for your rod holder and rod storage needs. Whether it's on your boat or in your garage, our variety of rod holders provide you with the options needed to organize, store and fish efficiently. All of the Rod Holder Clusters are sold individually and stored in a mesh bag for easy drying if stored wet.

DELUXE TRIDENT ROD HOLDER CLUSTERS

- ▶ Maximize kite rod placement and usage on boat
- ▶ Durable, welded, high-polished aluminum construction
- ▶ Three, 9-3/4" flared rod holders in a trident design
- ▶ 1-1/2" shaft fits into standard rod holders with a 1-5/8" diameter
- ▶ Eye strap attachment for safety lanyard and/or de-hooker placement
- ▶ Large 9-3/4" rod holders handle bigger and heavier rods and reels



F31-0780 / F31-0781

KITE FISHING ROD CLUSTER

- ▶ 15° bent shaft for clearance
- ▶ Fits all standard gunnel mount rod holders
- ▶ Fish with multiple rods from one holder
- ▶ Includes form-fitted, anti-fungal PVC white liner
- ▶ Gimbal design for secure locking placement on a standard 1/4" pin inside the rod holder
- ▶ Sold individually



OLYMPIC ROD HOLDER CLUSTER

- ▶ Lightweight and tightly groups five rods in one rod holder
- ▶ Flared 9-3/4" rod holders for big game tackle
- ▶ Durable, welded, high-polished anodized aluminum construction
- ▶ I-Beam construction ensures rods are locked and properly spread out
- ▶ Fits into standard rod holders 1-5/8" in diameter
- ▶ Ideal for storing rods in a compact space
- ▶ Convenient rigging station in preparation of a trip
- ▶ Accepts F31-2201WHA-C insert, replacement sold separately
- ▶ Solid gimbal design for additional strength



PART NUMBER	DESCRIPTION	UNIT	PACK	UPC
F31-0780BXY-1	Deluxe Trident Rod Holder Cluster Straight	Each	2	630838084844
F31-0781BXY-1	Deluxe Trident Rod Holder Cluster Offset	Each	2	630838084851
F31-0770BSA-1	Kite Fishing Rod Cluster	Each	4	630838024390
F31-0790BXY-1	Olympic Rod Holder Cluster	Each	2	630838084837

ELECTRONICS

Enhance onboard safety with manual and electric VHF Antenna Mounts, which enable boaters to easily adjust antennas without climbing on gunnels or seatbacks.

GRAND SLAM 800 VHF ANTENNA MOUNT

- Machine, anodized aluminum body and polished Type-316L stainless steel crank handle
- Crank handle folds flush into base
- Mounts through hardtops up to 2" thick
- Accepts all standard VHF antennas on the market
- 3-year limited warranty



GRAND SLAM 860 ELECTRIC VHF ANTENNA MOUNT

NEW



- Standard 1"-14 thread (male) shaft to accept standard VHF antennas up to 8'
- Polished stainless-steel body with a mirrored finish
- Comes with a 12" wire lead and water-sealed Deutsch connector, using 18-gauge wire from the base
- Operates on 12-volt DC for lift and descent
- Integrated nylon knob on the stainless-steel breakaway pin allows for manual operation in case of power failure
- Pairs with Wedge Plate (WP-860-960WHA), sold separately
- 1-year limited warranty



PART NUMBER	DESCRIPTION	UNIT	PACK	UPC
GS-800-1*	Grand Slam 800 VHF Antenna Mount	EA	4	630966089629
GS-860*	Grand Slam 860 Electric VHF Antenna Mount	EA	4	631352093480

*MAP Program

ELECTRONICS

Improve onboard safety with manual and electric Masthead Anchor Lights. These lights can easily be adjusted from the deck without climbing on gunnels or seatbacks.

GRAND SLAM 900 MASTHEAD ANCHOR LIGHT

- Certified for USCG-required 3 NM
- Ideal for powered vessels 39' and under
- Light runs on 12 volts and consists of four 3-watt LED Cree chips driven by two Mean Well drivers
- Light and shaft included
- Mounts through hardtops up to 2" thick
- Height of light from hardtop - 39-1/2"
- 3-year limited warranty



NEW



GRAND SLAM 960 ELECTRIC MASTHEAD ANCHOR LIGHT



- Ideal for boats 39' in length or shorter
- Certified for USCG-required 3-nm
- Includes tube, light and 6" lead of 20-gauge wire from the base
- Polished stainless-steel body with a mirrored finish
- Includes tube, light and 6" lead of 20-gauge wire from the base
- 12-volt DC power supply for light function
- 5-Watt Stern Light and 10-watt Anchor
- Low-draw, 0.6 amps per light
- Low-voltage 12-24VDC
- Integrated nylon knob on the stainless-steel breakaway pin allows for manual operation in case of power failure
- Pairs with Wedge Plate (WP-860-960WHA), sold separately
- 1-year limited warranty

PART NUMBER	DESCRIPTION	UNIT	PACK	UPC
GS-900-1*	Grand Slam 900 Masthead Anchor Light	EA	4	630972089682
GS-960*	Grand Slam 960 Electric VHF Antenna Mount	EA	4	631378093747

*MAP Program

RUB RAIL

RUB RAIL OVERLAY INSERT KITS

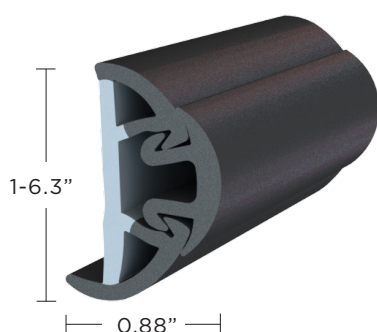
SUPRO-FLEX



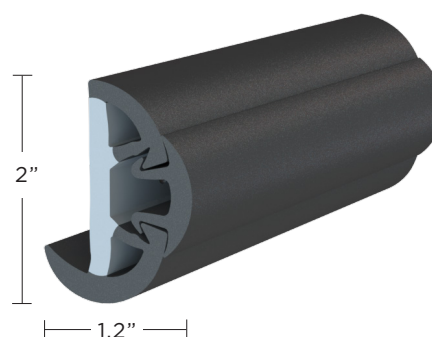
Introducing the Semi-Rigid SuproFlex Rub Rail Kit with a Flexible Vinyl Overlay Insert – an all-in-one Rub Rail replacement kit that compliments a variety of boat types, including bass boats, and freshwater and saltwater bay boats. Semi-Rigid SuproFlex features a semi-rigid vinyl back and a 95-durometer, firmer face, and pairs exclusively with our attractive Flexible Overlay Vinyl Insert for added protection from impact and style. Additionally, this co-extruded vinyl rub rail features shock-absorbing channels for higher impact resistance and requires less heat during installation when compared to other semi-rigid or rigid profiles. This rub rail kit is available in a variety of sizes and colors, and includes stainless steel end caps and screws.



- Co-extruded to provide two levels of hardness
- Semi-Rigid backing and 95-durometer front
- Pairs exclusively with V12-9992 Flexible Overlay Vinyl Insert (included in kit)
- Shock-absorbing channels for higher impact resistance
- Lighter weight than traditional vinyl rub rail
- Requires no pre-forming and minimal heating
- Predrilled for fasteners
- Kit includes stainless-steel end caps and screws



V11-9991



V11-9993

PART NUMBER	DESCRIPTION	UPC
V11-9991BBK60-2	SuproFlex Rub Rail Kit, Small, Black w/ Black Insert Overlay, 60'	631367093635
V11-9991WWK60-2	SuproFlex Rub Rail Kit, Small, White w/ White Insert Overlay, 60'	631368093641
V11-9993BBK60-2	SuproFlex Rub Rail Kit, Medium, Black w/ Black Insert Overlay, 60'	631369093657
V11-9993BBK80-2	SuproFlex Rub Rail Kit, Medium, Black w/ Black Insert Overlay, 80'	631370093660
V11-9993WWK80-2	SuproFlex Rub Rail Kit, Medium, White w/ White Insert Overlay, 80'	631371093676

RUB RAIL

RUB RAIL KITS

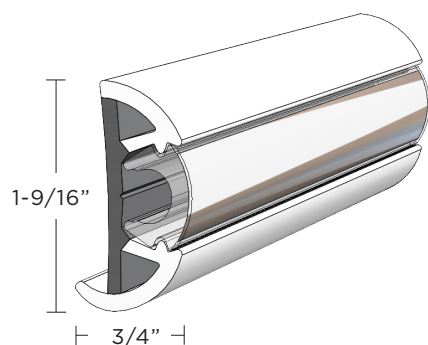


SUPRO-FLEX

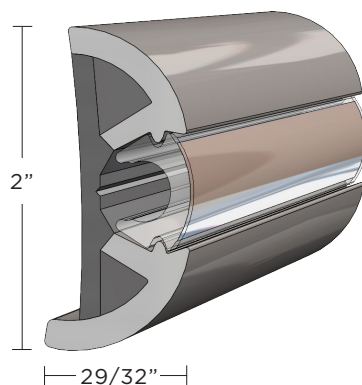
SuproFlex Rub Rail Kits are lightweight and ultra-flexible – saving you time and providing a seamless precision fit. The innovative SuproFlex series is co-extruded vinyl that provides two levels of hardness – ensuring enhanced protection from impact. SuproFlex Rub Rail requires minimal heating – reducing installation time and manpower. Additionally, SuproFlex Rub Rail requires no pre-forming and easily molds to most hull shapes. This rub rail kit is available in a variety of sizes and colors.



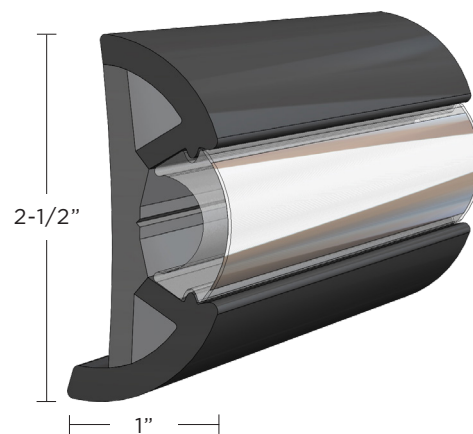
- ▶ Tight-radius bending can be made with minimal heating
- ▶ Easy handling making these rub rails a good choice for do-it-yourself boaters
- ▶ Accepts flex chrome insert V12-0307CP and V12-9980CP
- ▶ Kit includes SuproFlex Rub Rail, Flex Chrome Insert, stainless-steel end caps and stainless-steel mounting screws



V11-9960



V11-9990



V11-9970

PART NUMBER	DESCRIPTION	UPC
V11-9960BBK60-2	SuproFlex Rub Rail Kit, Small, Black w/Flex Chrome Insert, 60'	6310040900003
V11-9960WCM60-2	SuproFlex Rub Rail Kit, Small, Frosty White w/Flex Chrome Insert, 60'	6310050900019
V11-9990BBK60-2	SuproFlex Rub Rail Kit, Small, Black w/Flex Chrome Insert, 60'	6310110900072
V11-9990WCM60-2	SuproFlex Rub Rail Kit, Medium, Frosty White w/Flex Chrome Insert, 60'	6310100900066
V11-9990BBK80-2	SuproFlex Rub Rail Kit, Medium, Black w/Flex Chrome Insert, 80'	6310060900025
V11-9990WCM80-2	SuproFlex Rub Rail Kit, Medium, Frosty White w/Flex Chrome Insert, 80'	6310070900031
V11-9990GRD80-2	SuproFlex Rub Rail Kit, Medium, Gray w/Flex Chrome Insert, 80'	6310500900460
V11-9970BKA100-1	SuproFlex Rub Rail, Large, Blake, 100', Individual Coil	6310080900047
V12-9980CP100-1	Flex Chrome Insert 15/16" X 17/32", 100', Individual Coil for V11-9970	6310090900053
F16-0276	Stainless Steel End Cap for V11-9970	6310150901115

RUB RAIL

RIGID RUB RAIL KITS

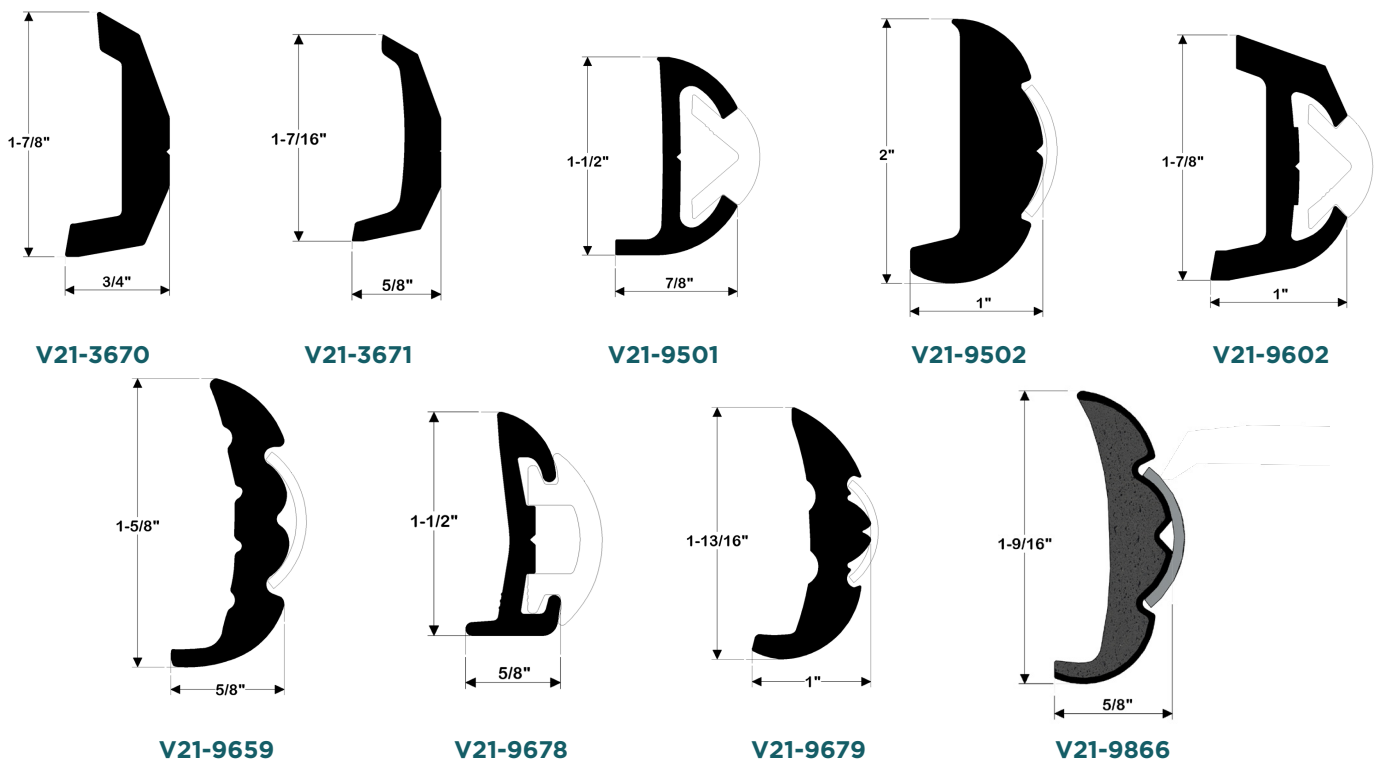


NEW

CUT LENGTHS FOR EASY SHIPPING

Get Rigid Vinyl Rub Rail delivered to your location with this exclusive cut length kit program! Choose from TACO's 9 most popular Rigid Vinyl Rub Rail profiles to have shipped UPS or FedEx direct to your location. No special freight carrier needed! Each rigid profile and, if applicable, stainless-steel insert, will be cut in shorter sizes with pre-drilled holes for easy installation. Vinyl inserts will arrive in one continuous coil.

**Drawings
not to scale**



PART NUMBER	DESCRIPTION	COLOR	INSERT REQUIRED (NOT INCLUDED)	UNIT
V21-3670BKA20D-3	Cut into three pieces (7.5' X 7.5' X 5')	Black	N/A	EA
V21-3670WHA20D-3	Cut into three pieces (7.5' X 7.5' X 5')	Arctic White	N/A	EA
V21-3671BKA20D2-3	Cut into three pieces (7.5' X 7.5' X 5')	Black	N/A	EA
V21-9501WHC20D-3	Cut into three pieces (7.5' X 7.5' X 5')	Frosty White	V12-0303	EA
V21-9502WHC20DV05-3	Cut into three pieces (7.5' X 7.5' X 5')	Frosty White	S11-4650P6-1	EA
V21-9602WHA20D-3	Cut into three pieces (7.5' X 7.5' X 5')	Arctic White	S11-4511P6-1	EA
V21-9659BKA20D-3	Cut into three pieces (7.5' X 7.5' X 5')	Black	S11-4511P6-1	EA
V21-9659WHC20D-3	Cut into three pieces (7.5' X 7.5' X 5')	Frosty White	S11-4511P6-1	EA
V21-9678BKA20D-3	Cut into three pieces (7.5' X 7.5' X 5')	Black	V12-4144	EA
V21-9678WHA20D-3	Cut into three pieces (7.5' X 7.5' X 5')	Arctic White	V12-4144	EA
V21-9679BKA20D-3	Cut into three pieces (7.5' X 7.5' X 5')	Black	S11-4511P6-1	EA
V21-9679WHC20D-3	Cut into three pieces (7.5' X 7.5' X 5')	Frosty White	S11-4511P6-1	EA
V21-9866WHC20D-3	Cut into three pieces (7.5' X 7.5' X 5')	Frosty White	S11-4511P6-1	EA

Factory cut pieces for easy splicing.

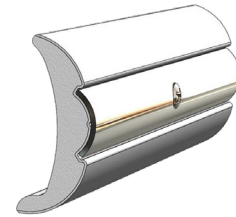
RUB RAIL

RIGID VINYL RUB RAIL

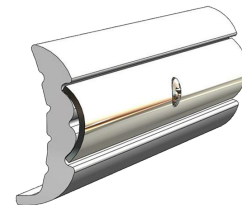


RIGID VINYL FLEX CORE RUB RAIL

- Solid, rigid PVC cap stock exhibits traditional surface characteristics, appearance and impact properties
- Lightweight, easy handling and installation
- Vacuum calibration tooling allows for tighter dimensional tolerance and sizing consistency
- Drilled and countersunk on 8" centers
- Uses stainless steel inserts S11-4511P (6', 12' & 20')
- High-density core offers improved shock-absorbent impact resistance
- Available in a continuous coil, eliminating butt joints around gunwale
- Improved bending characteristics and ability to cold form



V21-9906

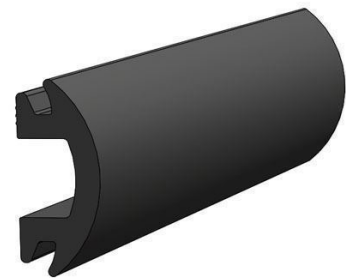


V21-9959

PART NUMBER	DESCRIPTION	UNIT	PACK	UPC
V21-9906WHC60D	Rigid Vinyl Flex-Core Rub Rail, Frosty White, 2" x 60' coil	Each	4	630838084691
V21-9906BKA60D	Rigid Vinyl Flex-Core Rub Rail, Black, 2" x 60' coil	Each	4	630838084684
V21-9959WHC50D	Rigid Vinyl Flex-Core Rub Rail, Frosty White, 1-9/16" x 50' coil	Each	4	630838084363
V21-9959WHC60D	Rigid Vinyl Flex-Core Rub Rail, Frosty White, 1-9/16" x 60' coil	Each	4	630838084370

VINYL INSERT FOR PONTOON BOATS

- Vinyl insert used with most pontoon boats
- Soft PVC insert provides cushion effect to absorb impact
- Insert is 1/2" W x 1-3/16" H



PART NUMBER	DESCRIPTION	PACK	UPC
V12-4144BKA50-1	Flexible Vinyl, Black Rub Rail Insert, 1/2"W x 1-3/16"H x 50'L	4	630838019181
V12-4144BKA70-1	Flexible Vinyl, Black Rub Rail Insert, 1/2"W x 1-3/16"H x 70'L	4	630838019198
V12-4144BKA250	Flexible Vinyl, Black Rub Rail Insert, 1/2"W x 1-3/16"H x 250'L	2	630838019174

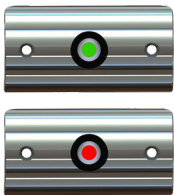
RUB RAIL

NAVIGATION LIGHTS



RUB RAIL MOUNTED LED NAVIGATION LIGHTS

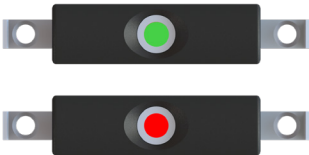
- 3-Watt Port (Red) and Starboard (Green) LEDs
- Low-draw, less than 0.25 Amperes
- Low-voltage 12-14VDC
- Enables more deck space
- Includes stainless steel or nylon cover
- Reliable, long-life LEDs will provide years of maintenance-free service
- 6602 designed to fit V21-9659 and V21-9959 Rigid Vinyl Flex Core Rub Rail profiles or other like profiles
- 6800D designed to fit the V21-9906 or the profiles that use the 3/4" stainless-steel inserts
- Meets ABYC/USCG requirements for 2 NM range
- Ideal for up to 30' boats
- Patent USD760427 on F38-6602-1



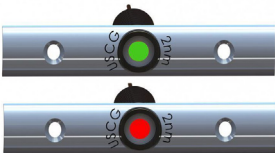
F38-6602-1



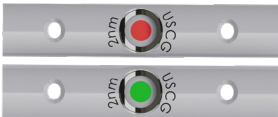
F38-6800D



F38-9960



F38-6810B



F38-6710

PART NUMBER	DESCRIPTION	PACK	UPC
F38-6602-1	Rub Rail Mounted Navigation Light Set	6	630838082857
F38-6710	Rub Rail Mounted Navigation Light Set	12	631208092049
F38-6800D	Rub Rail Mounted Navigation Light Set	6	630931089272
F38-6810B-1	Rub Rail Mounted Navigation Light Set	12	630959089551
F38-9960	Rub Rail Mounted Navigation Light Set (SuproFlex Only)	12	631363093592

BUCKET CHAIRS

ANCLOTE BUCKET SEAT



Introducing the Anclore Bucket Seat – the perfect combination of comfort, durability, functionality, and style. Longer boat rides in the Anclore Bucket Seat are instantly more enjoyable because of its state-of-the-art design with an integrated seat suspension – a mesh, shock-absorbing system that is integrated into the injection-molded seat bottom. The Anclore Bucket Seat also features plush cushioning, a wrap-around body style accented with premium diamond quilting, and an adjustable bolster – allowing for boaters to stand and steer when at the helm. This premium-quality bucket seat features high-density, anti-bacterial foam padding and marine-grade vinyl fabric treated with anti-microbial and UV stabilizers. Made in Largo, Florida, USA, we are proud to offer a 3-year limited warranty on the Anclore Bucket Seat – giving boaters the confidence they need when on the water.



- Ideal for pilot house boats, pontoons and dual consoles
- Features integrated seat suspension for enhanced comfort
- Rotomolded seat shell construction with a reinforced seat bottom
- Adjustable bolster
- Elegant diamond quilting
- Premium quality, marine-grade vinyl fabric treated with anti-microbial and UV stabilizers
- Plush, anti-bacterial foam padding, which provides durable support and protection from mold and mildew
- Form-fitting sides keep you comfortable
- Flexible, contemporary design
- Meets ABYC H-31 impact test
- Available in four different color combinations
- Mounts to any standard pedestal with a 5.25" 4-hole pattern



BA1-25WHT



BA1-25WHT-BLK



BA1-25WHT-GRY



BA1-25GRY-BLK

PART NUMBER	DESCRIPTION	WIDTH	DEPTH	HEIGHT	UNIT	COLOR	PACK	UPC
BA1-25WHT	Anclore Diamond Bucket Seat	25.5"	27"	24.75"	Each	White	4	631195091919
BA1-25WHT-BLK	Anclore Diamond Bucket Seat	25.5"	27"	24.75"	Each	Black & White	4	631196091925
BA1-25WHT-GRY	Anclore Diamond Bucket Seat	25.5"	27"	24.75"	Each	Gray & White	4	631197091931
BA1-25GRY-BLK	Anclore Diamond Bucket Seat	25.5"	27"	24.75"	Each	Black & Grey	4	631198091947

BUCKET CHAIRS

CALADESI BUCKET SEAT



Introducing the Caladesi Bucket Seat – the perfect combination of comfort, durability, functionality, and style. Longer boat rides in the Caladesi Bucket Seat are instantly more enjoyable because of its state-of-the-art design with an integrated seat suspension – a corrosion-proof, stainless-steel, coil-spring suspension grid system integrated into the injection-molding seat bottom. The Caladesi Bucket Seat also features plush cushioning, a wrap-around body style accented with a smooth fabric finish, and a sporty back cutout that allows for breathability and flair. This bucket seat also features an adjustable bolster – allowing for boaters to stand and steer when at the helm. This premium-quality bucket seat features high-density, anti-bacterial foam padding and marine-grade vinyl fabric treated with anti-microbial and UV stabilizers. Made in Largo, Florida, USA, we are proud to offer a 3-year limited warranty on the Caladesi Bucket Seat – giving boaters the confidence they need when on the water.

- Ideal for pilot house boats, pontoons and dual consoles
- Features integrated seat suspension for enhanced comfort
- Rotomolded seat shell construction with a reinforced seat bottom
- Adjustable bolster
- Premium quality, marine-grade vinyl fabric treated with anti-microbial and UV stabilizers
- Plush, anti-bacterial foam padding, which provides durable support and protection from mold and mildew
- Form-fitting sides keep you comfortable
- Flexible, contemporary design
- Meets ABYC H-31 impact test
- Available in four different color combinations
- Mounts to any standard pedestal with a 5.25" 4-hole pattern



BA2-25WHT



BA2-25WHT-BLK



BA2-25WHT-GRY



BA2-25GRY-BLK

PART NUMBER	DESCRIPTION	WIDTH	DEPTH	HEIGHT	UNIT	COLOR	PACK	UPC
BA2-25WHT	Caladesi Smooth Bucket Seat	25.5"	27"	24.75"	Each	White	4	631199091953
BA2-25WHT-BLK	Caladesi Smooth Bucket Seat	25.5"	27"	24.75"	Each	Black & White	4	631200091965
BA2-25WHT-GRY	Caladesi Smooth Bucket Seat	25.5"	27"	24.75"	Each	Gray & White	4	631201091971
BA2-25GRY-BLK	Caladesi Smooth Bucket Seat	25.5"	27"	24.75"	Each	Black & Grey	4	631202091987

HELM CHAIRS



BOCA SPORT CHAIR



- Premium quality, marine-grade vinyl fabric treated with anti-microbial and UV stabilizers
- Plush, anti-bacterial foam padding, which provides durable support and protection from mold and mildew
- Form-fitting sides keep you comfortable
- Flexible, contemporary design
- Meets ABYC H-31 impact test
- Powder-coated armrest brackets
- Powder-coated, roll-back seat hinge with recessed hinge for protection
- Roll-back seat bolster allows quick repositioning
- Ideal for boats up to 30'
- Includes foldable armrests and adjustable bolster



CAPRI HELM CHAIR DELUXE



- Adjustable armrests and bolster (except 23" chair)
- Premium marine-grade vinyl with anti-microbial and UV stabilizers
- Plush foam padding
- 25" compatible with Spider seat bases
- Meets ABYC H-31 impact test
- Stainless-steel cast armrest brackets, roll-back seat hinge and shield
- Durable fiberglass seat back
- Roll-back seat bolster for quick repositioning and helm access



Capri Helm Chair

COLOR OPTIONS:



WHITE



TOAST



FLAX



Capri Helm Bench, Dual Bolster

PART NUMBER	DESCRIPTION	SIZE	UPC
HA4-25WHA-7-0000-0-0	Boca Sport Helm Chair, White	25"	630915089113
HA4-25FLAX-7-0000-0-0	Boca Sport Helm Chair, Capriccio Flax	25"	631385093815
HA4-25TOAST-7-0000-0-0	Boca Sport Helm Chair, Capriccio Toast	25"	631390093862
HA4-25G2-7-0000-0-0	Boca Sport Helm Chair, Gen 2, White	25"	630838082567
HA2-23WHA-7-0000-0-0	Capri Deluxe Helm Chair (no arms), White	23"	631429094259
HA1-25WHA-7-0000-0-0	Capri Deluxe Helm Chair, White	25"	630838082352
HA1-25FLAX-7-0000-0-0	Capri Deluxe Helm Chair, Capriccio Flax	25"	631379093753
HA1-25TOAST-7-0000-0-0	Capri Deluxe Helm Chair, Capriccio Toast	25"	631380093766
HA1-28WHA-7-0000-0-0	Capri Deluxe Helm Chair, White	28"	630838082413
HA1-36WHA-7-0000-0-0	Capri Helm Bench, Single Bolster, White	36"	630838082475
HA1-40WHA-7-0000-0-0	Capri Helm Bench, Single Bolster, White	40"	630838082512
HA1-40WHA-0000-7-0	Capri Helm Bench, Double Bolster, White	40"	630914089107

HELM CHAIRS



SIESTA SPORT CHAIR

- ▶ Premium marine-grade vinyl with anti-microbial and UV stabilizers
- ▶ Plush foam padding
- ▶ 25" compatible with Spider seat bases
- ▶ Roll-back seat bolster allows quick repositioning
- ▶ Meets ABYC H-31 impact test requirements



OPEN WATER SPORT CHAIR

- ▶ Smooth, inner bolster hinges to help avoid racking and binding
- ▶ Strong, powder-coated aluminum armrests with matching padding and material
- ▶ Ergonomic back and seat support
- ▶ Sporty back rest cutouts
- ▶ Meets ABYC H-31 impact test requirements



BREEZE WAY SPORT CHAIR

- ▶ Features integrated seat suspension for enhanced comfort
- ▶ Premium quality, marine-grade vinyl fabric treated with anti-microbial and UV stabilizers
- ▶ Plush, anti-bacterial foam padding, which provides durable support and protection from mold and mildew
- ▶ Available in static or reclining configurations
- ▶ Features back-mounted, foldable armrests
- ▶ Meets ABYC H-31 impact test requirements



PART NUMBER	DESCRIPTION	SIZE	UPC
HA6-25-O-WHA	Siesta Sport Chair, White	25"	631363093740
HA12-25-O-WHA	Open Water Sport Chair, Double Bolster, White	25"	631363093766
HA12-25-O-FLAX	Open Water Sport Chair, Double Bolster, Capriccio Flax	25"	631382093788
HA12-25-O-TOAST	Open Water Sport Chair, Double Bolster, Capriccio Toast	25"	631383093794
HA12-25-O-G2	Open Water Premium Sport Chair, White	25"	631428094243
HA12-44-O-WHA-BA	Open Water Sport Bench, Double Bolster, White	44"	631210092068
HA12-53-O-WHA	Open Water Sport Bench, Double Bolster, White	53"	631211092074
HA12-56-O-WHA	Open Water Sport Bench, Double Bolster, White	56"	631335093315
HA12-63-O-WHA	Open Water Sport Bench, Triple Bolster, White	63"	631336093321
HA18-25-WHT-GRY	Breeze Way Sport Helm Chair, White	25"	631363093767

HELM CHAIRS



SKYWAY DELUXE HELM CHAIR

- Features upgraded stainless-steel framing with integrated seat suspension
- Available with solid teak armrest assembly and hinge cover accents
- Upgraded exterior stainless-steel bolster actuating bracket
- Mounts to any industry standard 5" x 12" slide plate assembly
- Meets ABYC H-31 impact testing
- 1-year limited warranty on teak upgrade**



OPEN WATER SPORT BENCH

- Available in two- and three-seater options
- Premium quality, marine-grade vinyl fabric treated with anti-microbial and UV stabilizers
- Plush, anti-bacterial foam padding, which provides durable support and protection from mold and mildew
- Includes foldable armrests and dual or triple adjustable bolsters
- Roll-back seat hinge with recessed hinge for protection
- Roll-back seat bolsters allow quick repositioning
- Meets ABYC H-31 impact test requirements



BOCA SPORT BENCH SEAT

- Powder-coated armrest brackets and roll-back seat hinges with recessed hinge for protection
- Premium quality, marine-grade vinyl fabric treated with anti-microbial and UV stabilizers
- Plush, anti-bacterial foam padding, which provides durable support and protection from mold and mildew
- Meets ABYC H-31 impact test requirements
- The center armrest includes two stainless steel Type-316L cup holders



ABACO SPORT BENCH

- Powder-coated aluminum armrests with matching padding and material
- Smooth, inner bolster hinges to help avoid racking and binding
- Ergonomic back and seat support
- Meets ABYC H-31 impact test requirements
- The center armrest includes two stainless steel Type-316L cup holders



PART NUMBER	DESCRIPTION	SIZE	UPC
HA17-25-WHT-TEAK	Skyway Deluxe Helm Chair with Teak, White	25"	631401093973
HA17-25-WHT	Skyway Deluxe Helm Chair, White	25"	631423094194
HA12-44-O-WHA-BA	Open Water Sport Bench, Double Bolster, White	44"	631210092068
HA12-53-O-WHA	Open Water Sport Bench, Double Bolster, White	53"	631211092074
HA12-56-O-WHA	Open Water Sport Bench, Double Bolster, White	56"	631335093315
HA12-63-O-WHA	Open Water Sport Bench, Triple Bolster, White	63"	631336093321
HA4-53WHA-7-0000-0-0	Boca Sport Bench, Double Bolster, White	53"	631363093767
HA13-53WHA-00-0	Abaco Sports Bench, Double Bolster, White	53"	631363093768

MANUAL SEAT SLIDES

FRICITIONLESS, STRONG & LOW PROFILE



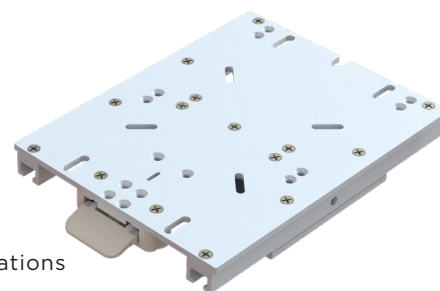
Adjustable, low-profile slides that provide frictionless operation and are easily adaptable for a multitude of marine applications. These feature high-strength polymer glides for smooth movement with a durable locking action. Each slide comes with a front-mounted activation lever, which is easily accessible in all positions when seated. All slides meet ABYC H31 testing standards and have a precision-machined 6000-series aluminum chassis.



M20-1013A

13" X 10" WITH DETACHABLE MOUNT

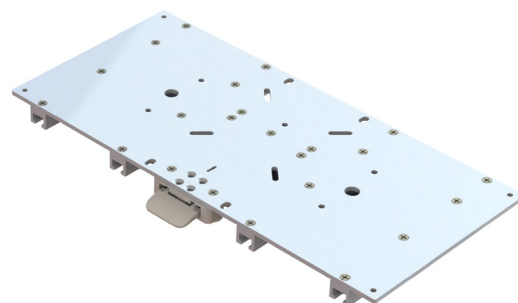
- Ideal for seats 23" to 28" wide
- Features seven adjustable, equally spaced positions with 5-1/2" of travel
- Secure fit with universal mounting bolt pattern on both pedestal and box applications
- Easy installation and detachment with modular mounting plate



M20-2411

11-1/8" X 24"

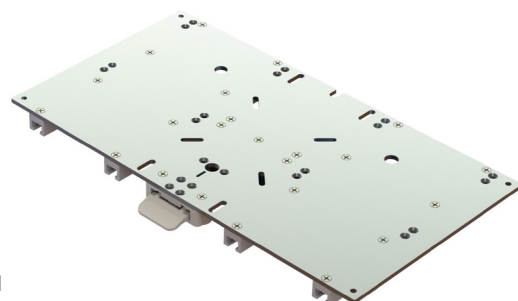
- Ideal for seats 29" to 40" wide
- Ideal seat length/depth is 12" to 14"
- Double pin positive side lock
- Features five adjustable, equally spaced positions with 3-5/8" of travel
- Secure fit with universal mounting bolt pattern on box applications



M20-2413

13" X 24"

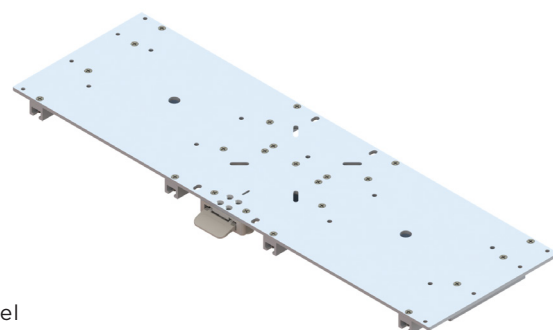
- Ideal for seats 29" to 40" wide
- Double pin positive side lock
- Features seven adjustable, equally spaced positions with 5-1/2" of travel
- Secure fit with universal mounting bolt pattern on box applications



M20-3611

11-1/8" X 36"

- Ideal for seats 41" to 54" wide
- Ideal seat length/depth is 12" to 14"
- Double pin positive side lock
- Features five adjustable, equally spaced positions with 3-5/8" of travel
- Secure fit with universal mounting bolt pattern on box applications



PART NUMBER	DESCRIPTION	OVERALL LENGTH	WIDTH	HEIGHT	UNIT	WEIGHT	PACK	UPC
M20-1013A	Low profile Adjustable Seat Slide	14.26"	10"	1.85"	Each	7.79 lbs.	1	631166091627
M20-2411	Low profile Adjustable Seat Slide	12.43"	24"	1.85"	Each	17.09 lbs.	1	631112091084
M20-2413	Low profile Adjustable Seat Slide	14.26"	14.26"	1.85"	Each	18.58 lbs.	1	631085090817
M20-3611	Low profile Adjustable Seat Slide	12.43"	38"	1.85"	Each	22.36 lbs.	1	631156091521

ELECTRIC SEAT SLIDES

QUIET, SELF-LOCKING & LOW PROFILE



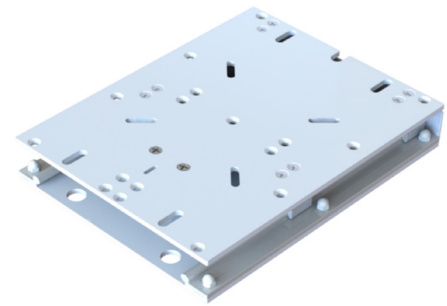
Fully electric low profile adjustable seat slides that can be stopped anywhere along the travel path. Each slide has an IP66 water resistance rating, meets H31 testing standards, and features a Rail/Linear Glide system that is self-lubricating, dirt resistant, quiet, corrosion free, lightweight and shock resistant. All electric seat slides and components are acid etched clear anodized. Each slide features a precision-machined 6000-series aluminum chassis. With a universal mounting bolt pattern, these slides securely fit on both pedestal and box applications.



M20-1013E

13-1/8" X 10"

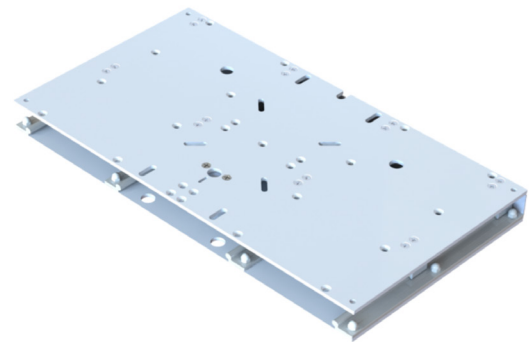
- Ideal for seats 23" to 28"
- Features 5" of travel distance (stroke length)
- Quiet operation ≤ 58dB
- Electric actuator
- Self-locking at any given position (at rated loads)



M10-2413E

13-1/8" X 24"

- Ideal for seats 29" to 40"
- Features 5" of travel distance (stroke length)
- Quiet operation ≤ 58dB
- Electric actuator



M20-3613E

13-1/8" X 36"

- Ideal for seats 41" to 54"
- Features 5" of travel distance (stroke length)
- Quiet operation ≤ 58dB
- Electric actuator
- Self-locking at any given position (at rated loads)



ELECTRIC SEAT SLIDE MOTOR SPECIFICATIONS

- 12V DC 9 AMP Max currentMax load 3500N
- Push and pull force of 1500N
- IP66 Rated
- Speed 13.5 mm/Sec @ 1500N

PART NUMBER	DESCRIPTION	LENGTH	WIDTH	HEIGHT	UNIT	WEIGHT	PACK	UPC
M20-1013E	Electric Low profile Adjustable Seat Slide	13-1/8"	10"	2.25"	Each	11 lbs.	1	631097090935
M20-2413E	Electric Low profile Adjustable Seat Slide	13-1/8"	24"	2.25"	Each	21 lbs.	1	631098090941
M20-3613E	Electric Low profile Adjustable Seat Slide	13-1/8"	36"	2.25"	Each	26 lbs.	1	631099090957

LEANING POSTS



NEPTUNE II LEANING POST



- Polished, anodized aluminum frame with grab-rail
- Four aluminum rod holders
- Folding foot rest
- Full-length mounting pads
- 72-quart storage area with strap
- Convenient, removable soft side under-seat storage bag
- Mildew, fungus and UV-resistant marine-grade vinyl fabric
- Features four adjustable aluminum rod holders and a folding footrest
- Continuous flat bar mounting pads



NEPTUNE TACKLE STORAGE BAG

- Large center storage space accommodates four full-size 3700 Plano boxes, four Plano 3600 boxes and four smaller Plano boxes
- Two 9" inner pockets - ideal for storing personal items
- One 29" long tool compartment for safely storing all tackle gear
- Includes welt track clips for hanging on Neptune II Leaning Post
- Two double zippered outer pockets - ideal for up to five fluorocarbon spools
- Carbon gray 1000 denier fabric with black trim and YKK marine-grade zippers
- Hard-shell bottom liner with 6 rubber feet and drain holes



PRODUCT NUMBER	DESCRIPTION	UNIT	PACK	UPC
L10-1003-1	Neptune II Leaning Post w/ Neptune Tackle Storage Bag	Each	4	630838025403
L10-1003BAG	Neptune Tackle Storage Bag	Each	2	630838029067

LEANING POSTS



NEPTUNE PREMIUM LEANING POST

- Removable fiberglass storage tray
- Four flush-mounted aluminum rod holders
- Folding foot rest
- Wrap around grab rail
- Durable aluminum seat hinges
- 72-qt cooler storage area with strap
- Hand-laid fiberglass deck
- Aluminum frame, marine-grade pipe
- Hand-polished mirror finish and anodized after fabrication
- No painted welds or crazing around bends
- Continuous flat bar mounting pads
- Mildew, fungus and UV-resistant



UNIVERSAL LEANING POST BACKREST

- Universal design to fit most leaning posts
- Arms install at desired width to fit rod holders
- Arms fold for easy storage when not in use



NEPTUNE III LEANING POST NEPTUNE III DELUXE LEANING POST

- Four poly tulip rod holders (L10-2005BSA-1)
- Four aluminum tulip rod holders and Back Rest/Grabrail (L10-2010BSA-1)
- Folding foot rest
- Cooler storage area and strap
- Aluminum frame, spiral sanded, bright dip anodized
- One-piece welded frame construction made from marine-grade aluminum
- Seat cushions constructed with marine-grade vinyl, foam and PVC board substrate
- Anti-warp and anti-rot
- Mildew, fungus and UV-resistant
- Stock frames for immediate shipping



L10-2005BSA-1



L10-2010BSA-1

PRODUCT NUMBER	DESCRIPTION	UNIT	PACK	UPC
L10-1001-1	Neptune Premium Leaning Post w/ fiberglass storage	Each	4	630838023294
L10-1002-1	Universal Leaning Post Backrest w/ folding arms	Each	4	630838023331
L10-2005BSA-1	Neptune III Leaning Post w/ 4 Poly Rod Holders	Each	4	630838082949
L10-2010BSA-1	Neptune III Deluxe Leaning Post w/ Backrest, Grab Rail & 4 Aluminum Rod Holders	Each	4	630838082840

MARINE ACCESSORIES

FENDER LOCKS



QUICK RELEASE FENDER LOCK

- Designed for fiberglass boats
- 7/8" ID for large rope
- Designed for simple single-hand operation
- Allows easy installation and removal of float-style fenders
- Large push-button for comfortable operation
- Stainless-steel Type-316L
- Overall height above deck: 1-3/5"
- Drain plug: 1/4" NPT



F16-0151-1

F16-1051R-1

PART NUMBER	DESCRIPTION	UNIT	PACK	UPC
F16-0151-1	Quick Release Fender Lock w/ 7/8" Eye Diameter	Each	12	630838084059
F16-0151R-1	Quick Release Fender Lock (Receiver Only)	Each	12	630838084882

QUICK RELEASE FENDER LOCK FOR FIBERGLASS

- Designed for fiberglass boats
- Manufactured from stainless steel Type-316L
- Overall height above deck is 1-11/16"
- Features a 1" diameter button
- Nylon ring washer to separate dissimilar metals
- Mounting application fastens from the bottom of the Receiver



PART NUMBER	DESCRIPTION	UNIT	PACK	UPC
F16-0200-1	Stainless Steel Quick Release Fender Lock	Each	12	630890088866

MARINE ACCESSORIES

FENDER LOCK & MULTI-PURPOSE CLEAT



ALUMINUM QUICK RELEASE FENDER LOCK

- Designed for pontoon boats
- Manufactured from 6000-series Aluminum
- Features a 1" diameter button
- Fits 1" to 1-1/4" square tube
- Mounting application fastens from the bottom of the square tube



NEW

PART NUMBER	DESCRIPTION	UNIT	PACK	UPC
F18-0186VEL-1	Aluminum Quick Release Fender Lock, Satin Anodized	Each	12	631209092055

MULTI-PURPOSE 15° PORTABLE CLEAT

- Stainless steel Type-304
- Large S-shape 9" cleat design
- Accommodates up to 3/4" dock line for larger boat applications
- Tube O.D. 1.25" fits into standard rod holders 1-5/8" diameter
- Loop hole design to hang fenders over the side
- Ideal for hanging hose while washing boat
- Packaged in mesh bag for easy drying if stored wet and to avoid scratching deck or storage surfaces on the boat



PART NUMBER	DESCRIPTION	UNIT	PACK	UPC
F16-0861POL-1	Multi-Purpose Cleat - 15° SS Type 304	EA	4	631376093725



ABOUT TACO

We create and provide the finest products across an expansive line of categories, listed below. We use only the highest quality materials, including Type-316L stainless steel, marine-grade aluminum alloys and weather-resistant plastic resins and compounds. Our breadth of capabilities and marine expertise means we have you covered from stem to stern.

- ▶ SPORT FISHING
- ▶ RUB RAIL
- ▶ SEATING & TABLE PEDESTALS
- ▶ BOAT SHADE
- ▶ CANVAS FABRICATION
- ▶ TOP & TOWER FABRICATION
- ▶ TRIM & MOLDING
- ▶ HINGES & LATCHES
- ▶ LED LIGHTS & ELECTRONICS
- ▶ DOCKSIDE ACCESSORIES



EMPOWERED BY  PATRICK

FOLLOW US ON SOCIAL MEDIA



@tacomarine



@tacomarine



@tacomarine



@tacomarine



TACO Marine



@taco_marine



HEADQUARTERS

TACO Metals, LLC.

sales@tacometals.com

DISTRIBUTION AND SALES

Largo, FL
Summerville, SC
Sparta, TN

MANUFACTURING

Sparta, TN
Largo, FL
Kunshan, China